



For a Safer and Smarter Railway



TURN-KEY SOLUTIONS

- TRACKSIDE CHECK POINT / TUNNEL
- SERVICE DEPOT & WORKSHOP INSPECTION

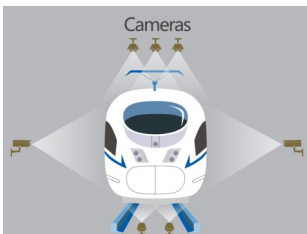
TRACKSIDE CHECK POINT / TUNNEL SOLUTIONS



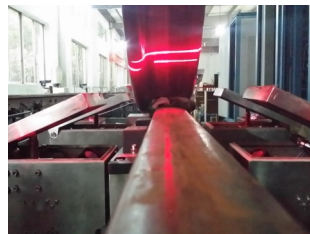
Check point / tunnel, as a comprehensive platform consisting many module-designed function units, is installed at trackside in order to implement multi-purpose monitoring and to carry out measurements for a running train. This includes monitoring wheel profile, wheel crack (with ultrasound), brake pad wear, pantograph strip wear, and fault recognition of other key components such as bolt missing and foreign object, etc.

Thanks to years of development and application experience in field, our check point solution is robust for the use under a wide variety of field conditions and types of railway vehicles.

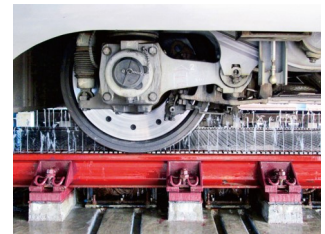
FEATURES & FUNCTIONS



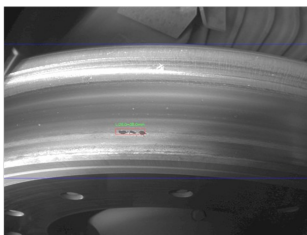
- Full Vehicle Machine Vision
- 3D, Artificial Intelligence
- Predictive Maintenance



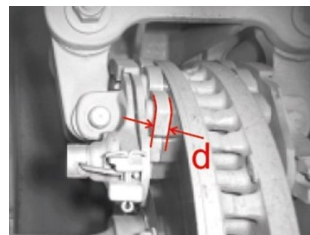
- Wheel Profile Measure
- Wheel Wear, Diameter
- Back-to-Back Gauge



- Wheel Crack Detection
- Arrayed Ultrasonic Probes
- Superior to EMAT Solution



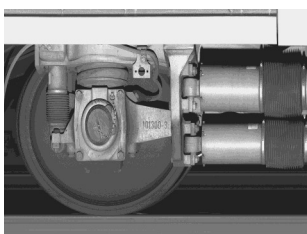
- Wheel Tread Monitor
- Flat Detection
- Spalling Detection



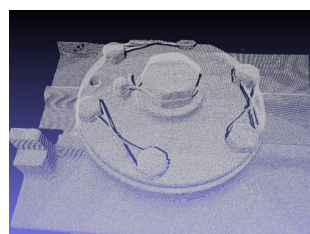
- Brake Condition Monitor
- Pad Thickness Measure
- Brake Installation Check



- Pantograph Monitor
- Strip Wear Measure
- 3D-based Fault Detection



- Top, Side, Bottom View
- Components Monitor
- Parts-Missing Check



- 3D Condition Monitor
- Dimension Measure
- Fault Recognition



- Pattern Recognition
- Data Mining, Prediction
- Smart Asset Management

SERVICE DEPOT & WORKSHOP SOLUTIONS



Our Underfloor Wheelset Ultrasonic Testing System (UW-UT) is designed to be efficient, accurate, and reliable for the use in service depot. With Underfloor Vehicle Bogie Machine Vision System (UVB-MV) integrated of Artificial Intelligence, 3D imaging, and robot automation techniques, we are moving the asset management into a new era of smart maintenance.

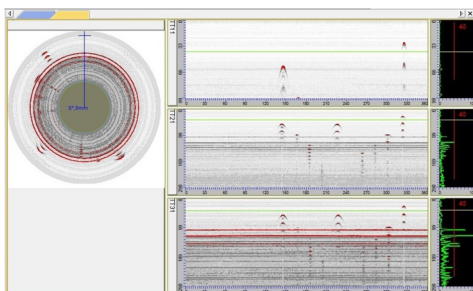
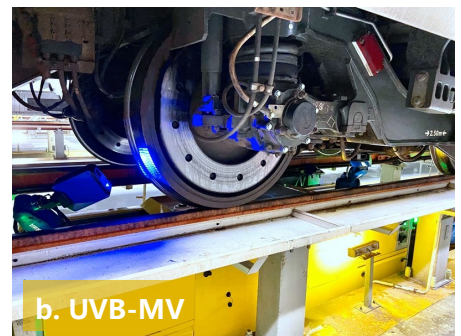
We also offer mobile UT testing systems for hollow axles (HA-UT) and solid axles (SA-UT), as well as a Dismounted Wheelset Ultrasonic Testing System (DW-UT), the gantry system widely used in heavy maintenance stage.

PRODUCTS LIST

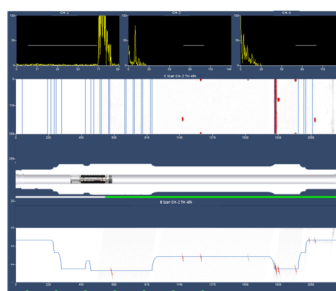
- a. UNDERFLOOR WHEELSET ULTRASONIC TESTING SYSTEM (UW-UT)
- b. UNDERFLOOR VEHICLE BOGIE MACHINE VISION SYSTEM (UVB-MV)
- c. HOLLOW AXLE ULTRASONIC TESTING SYSTEM (HA-UT)
- d. SOLID AXLE ULTRASONIC TESTING SYSTEM (SA-UT)
- e. DISMOUNTED WHEELSET ULTRASONIC TESTING SYSTEM (DW-UT)

YOUR BENEFITS

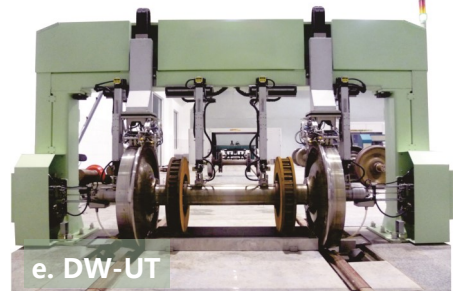
- Advanced Phased Array Ultrasonic Techniques
- Better Coverage and Compatibility, High Efficiency
- Smart Robot with Artificial Intelligence and 3D Imaging
- High Accuracy, Compatibility, Repeatability and Robustness
- Increase Inspection Efficiency, Reduce Human Factors
- Inspection Data Assessment, Support Smart Train Maintenance
- Key-components Monitoring, Failure Prevention, Safety Assurance
- Shorten Vehicle Downtime, Increase Vehicle Service Capability



↑ Wheel Ultrasonic Testing



↑ Axle Ultrasonic Testing



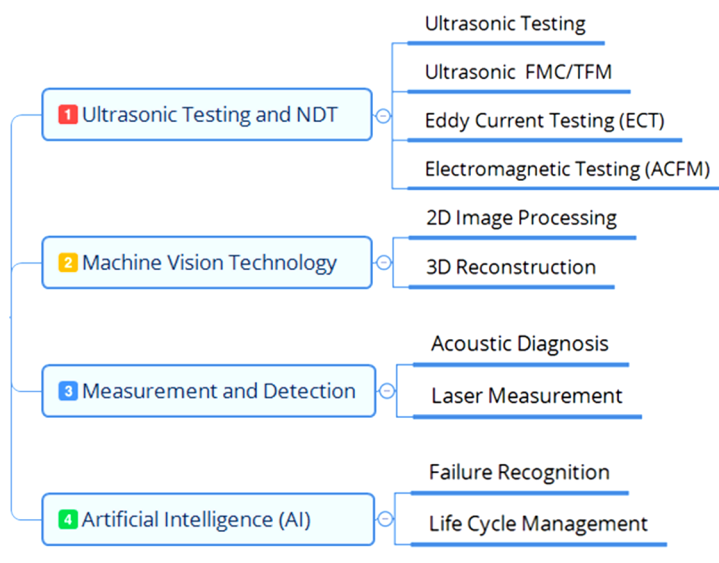
e. DW-UT

↑ Products List



ABOUT US

DTEC GmbH is located in the Frankfurt Rhein-Main region, Germany, with a 4000 square meters facility area. With years' experience in advanced ultrasonic testing and machine vision technologies, we design and develop railway safety solutions installed at trackside, in maintenance depots, and in manufacture workshops.



OUR PARTNERS

For a long time, we have been deeply rooted with each partner on R&D and marketing to provide high-performance products, and offer tailored services for the railway industry. Meanwhile, DTEC keeps continuously exploring new partnerships in railway operators, research organizations, valued suppliers, local representatives, and strategy market partners.



CONTACT US

DTEC GmbH
Siemensstr. 9
D-61191 Rosbach v. d. Höhe, Germany

+49 (0) 600 3497 9888
www.dtec-gruppe.com
info@dtec-gruppe.com

It is prohibited to reproduce the present publication in its entirety or partially in whatever form without prior written consent. Legal action may be taken against any infringer and/or any person breaching the aforementioned prohibitions. Subject to change without notice, errors excepted. Illustrations may differ from the original. The statements and information contained in this publication are for advertising purposes only and do not constitute an offer of contract. They shall neither be construed as a guarantee of quality or durability, nor as warranties of merchantability or fitness for a particular purpose.

2021 © DTEC GmbH, Rosbach v. d. Höhe, Germany



Scan to visit our website